

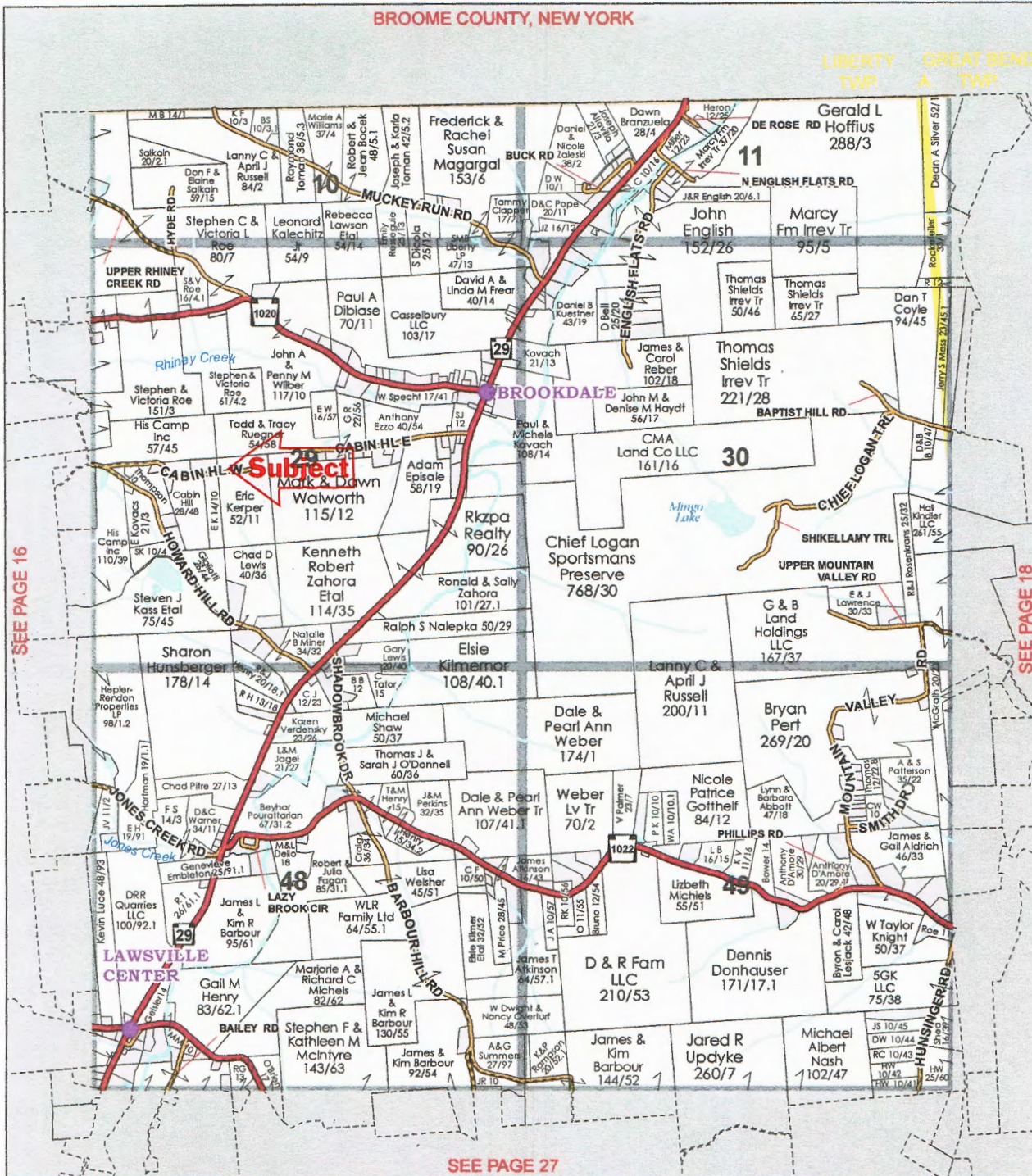


1 inch = 0.7 miles

0 0.5 1 Miles

GRIDS 10-11, 29-30, 48-49

Copyright © 2023 Mapping Solutions



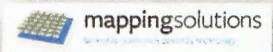
SEE PAGE 16

SEE PAGE 18

SEE PAGE 27

Why do some maps appear tilted or crooked?

Our maps use the State Plane Coordinate System, thus some individual maps may appear "tilted" or "crooked". This is not an error, the maps are shown as they were surveyed using this system and reflect a true north-south orientation. Since the earth is round, this "tilting" occurs when projecting the map on a flat image.



Quality Used Cars and Trucks

Shelley Lewis **570-278-1018** Don Newell
Cell: 607-244-9511

16929 State Route 706 • Montrose, PA 18801